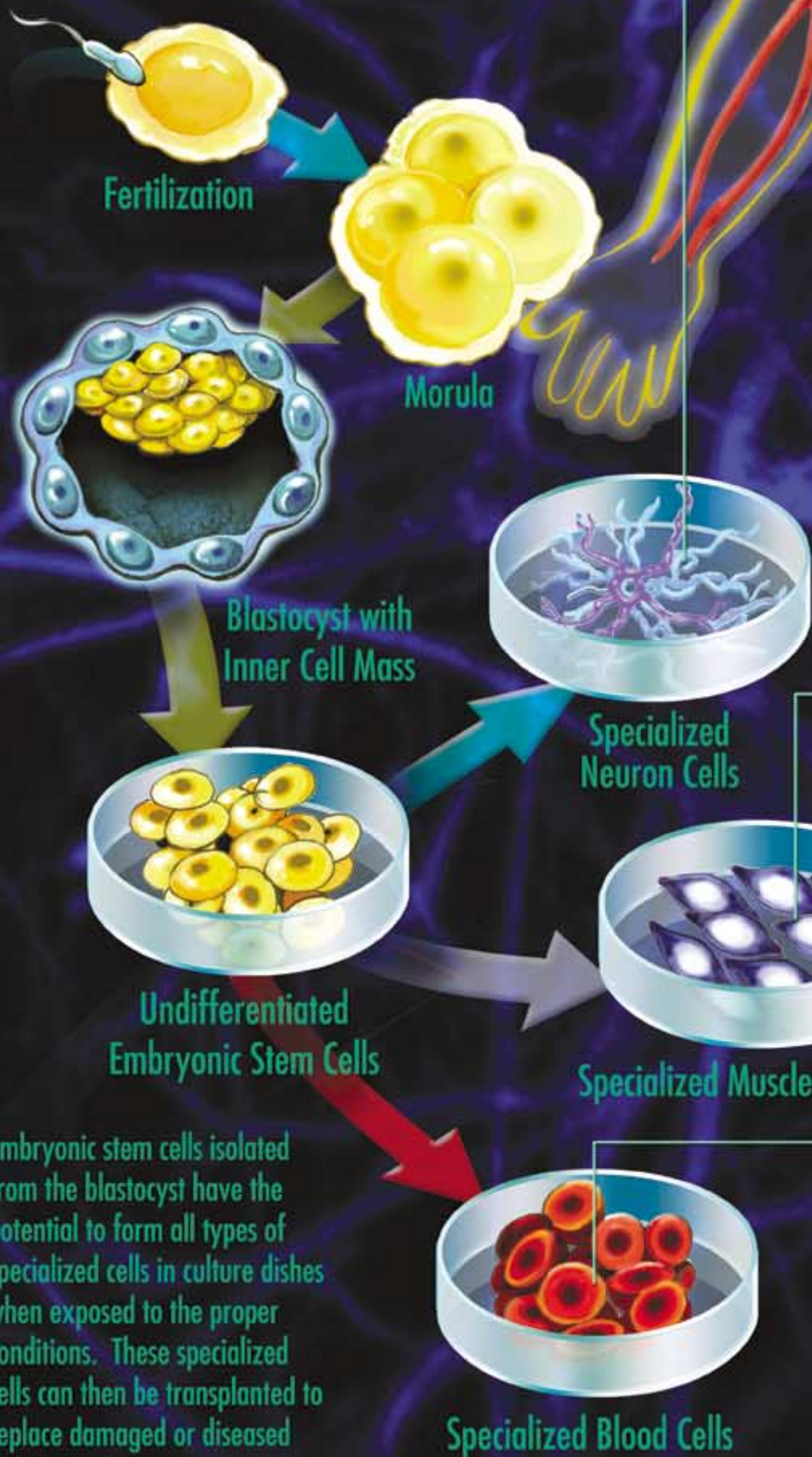


# Engage

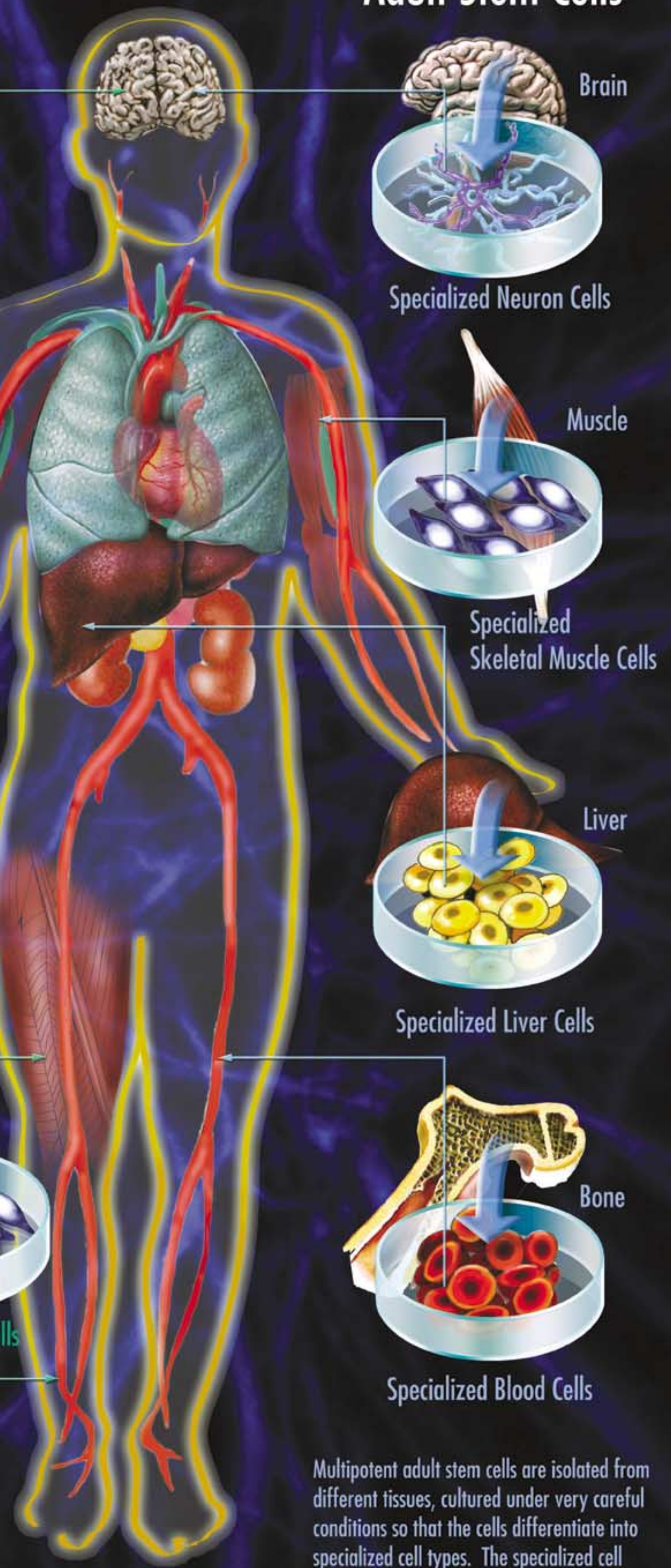
# Stem Cells

## Pluripotent Embryonic Stem Cells



Embryonic stem cells isolated from the blastocyst have the potential to form all types of specialized cells in culture dishes when exposed to the proper conditions. These specialized cells can then be transplanted to replace damaged or diseased cells in the body.

## Multipotent Adult Stem Cells



Multipotent adult stem cells are isolated from different tissues, cultured under very careful conditions so that the cells differentiate into specialized cell types. The specialized cell types can then be transplanted to replace damaged or diseased cells in the body.

Proudly sponsored by:



GenomeBritish Columbia  
GenomePulse  
Ontario Genomics Institute  
GenomeQuebec  
GenomeAtlantic



Stem Cell Network Réseau de cellules souches

Version française disponible