

# DIGESTIVE SYSTEM.

## ORAL CAVITY.

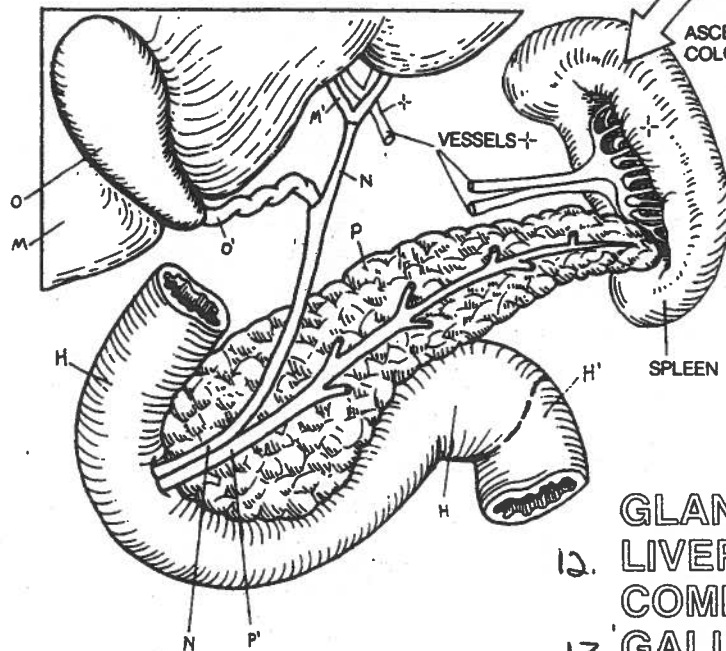
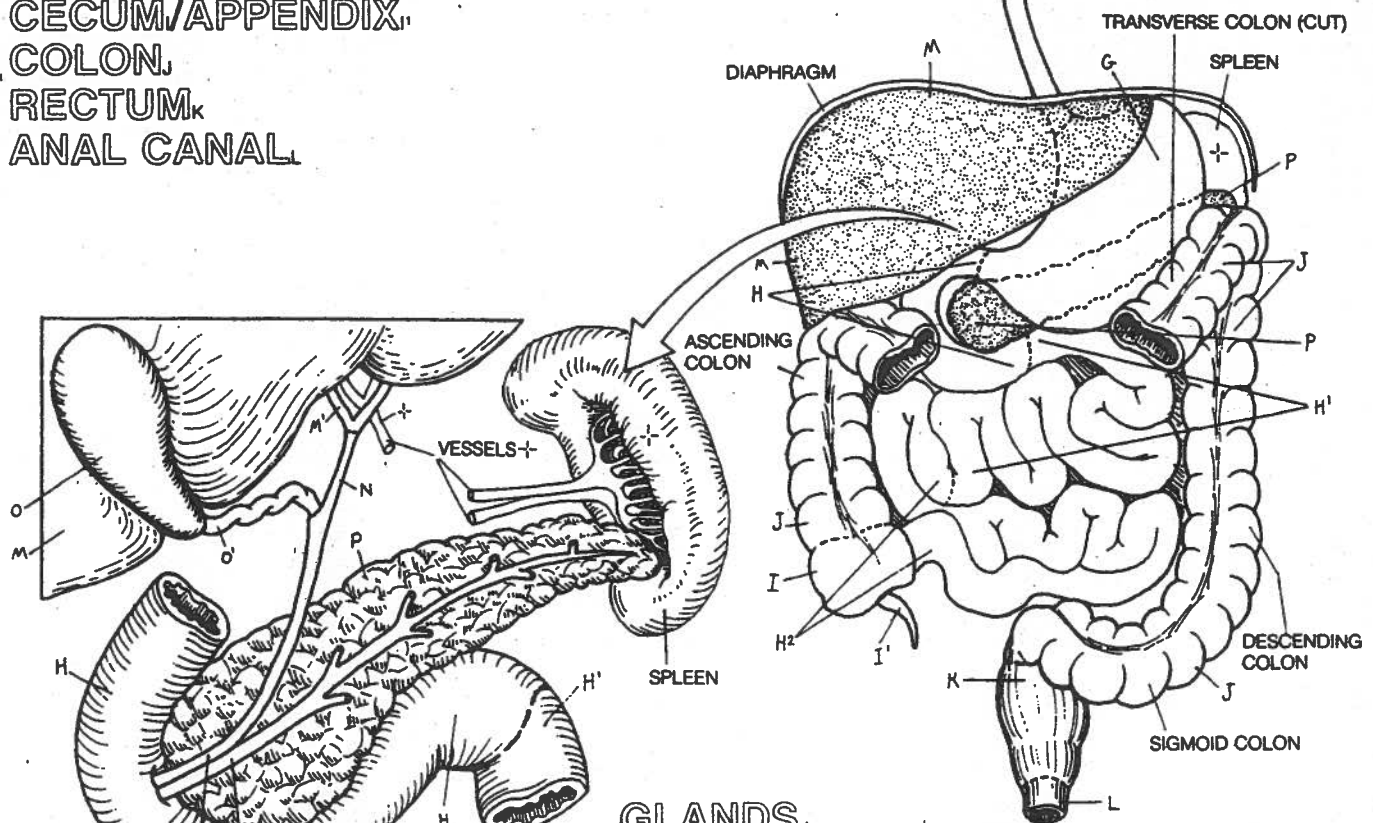
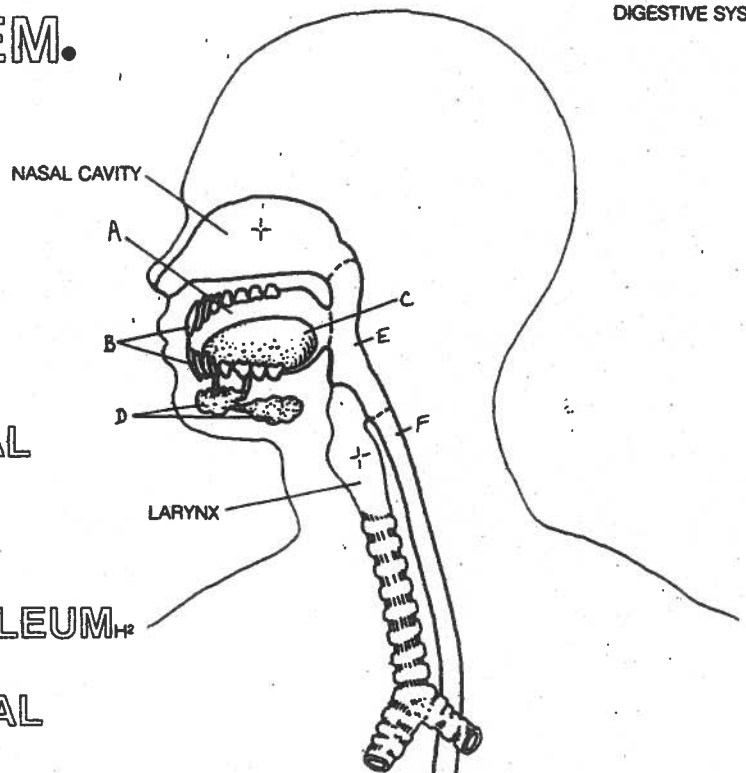
1. TEETH.
2. TONGUE.
3. SALIVARY GLAND.
4. PHARYNX.
5. ESOPHAGUS.

## UPPER GASTROINTESTINAL TRACT.

6. STOMACH.
7. SMALL INTESTINE.  
DUODENUM<sub>H</sub>/JEJUNUM<sub>H1</sub>/ILEUM<sub>H2</sub>

## LOWER GASTROINTESTINAL TRACT.

8. LARGE INTESTINE.
9. CECUM/APPENDIX.
10. COLON.
11. RECTUM.  
ANAL CANAL



## GLANDS.

12. LIVER<sub>M</sub>/HEPATIC DUCT<sub>M'</sub>  
COMMON BILE DUCT<sub>N</sub>
13. GALLBLADDER<sub>O</sub>/CYSTIC DUCT<sub>O'</sub>
14. PANCREAS<sub>P</sub>/DUCT<sub>P'</sub>